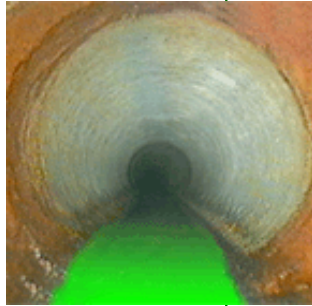


CONCENTRATED, NON-POLLUTING FORMULA



SEWER TRACING DYE is a convenient liquid tracing dye designed for use in all types of engineering work on sewer systems. It helps with: flow-time studies, septic systems inspections, overflow analysis and many other pollution control efforts. It creates an intense fluorescent yellow/green color for maximum visibility under a wide variety of conditions.

FOR USE IN:

- Tracing plumbing and leak detection
- Lake, river and pond studies
- Pollution studies
- Flow Mapping, rate and volume analysis
- Tracking storm and sewer drains
- Power plant piping tracing
- Septic system analysis
- Retention time studies
- Child Care Facilities
- Locker Rooms
- Health Clubs

FEATURES

- Highly visible and distinctive fluorescent yellow/green color can be measured using “black” ultraviolet light or precisely measured with a fluorometer.
- Concentrated formula is non-toxic and biodegradable.
- Excellent for finding leaks and conducting time-flow studies.
- Can be used when there is no sun or in low light conditions.

PROPERTIES

Appearance.....	Fluorescent green liquid
Fragrance.....	None
Specific Gravity	1.00
Flash Point.....	none
pH.....	7.0
Stability.....	1 Year
VOC content.....	0% by wt.

KAYLINE COMPANY, PO BOX 603207, CLEVELAND, OHIO 44103 (216) 566-9858 (800)426-5820 FAX (216)566-1228
www.kaylinecompany.com

Let Kayline Service All Your Building Maintenance Product Requirements!

- Industrial Cleaners □ Disinfectants □ Deodorizers □ Floor Finishes □
 Housekeeping Cleaners □ Hand Soaps □ Insecticides □ Weed Killers □
 Sewer & Drain Maintenance □ Winter Products □ Water Treatment □
 Roofing, Driveway, Flooring □ Long Life Light Bulbs □ Incandescent □
 Fluorescent □ Decorative □ Mercury Vapor □ Metal Halide □ High
 Pressure Sodium □ Quartz Halogen □ Compact Fluorescents □ Energy
 Saving Conversions □ Ballasts □ Specialty Lamps